

# RÄKKI RUGS

A COLLECTION OF RUGS  
CATALOGUE RETAIL | 2024





# RÄKKI RUGS

A COLLECTION OF RUGS



## RÄKKI RUGS

RÄKKI RUGS are high-quality, hand-knotted rugs that combine sensitive design with traditional craftsmanship from Nepal. By combining individual color design with carefully selected natural materials, RÄKKI RUGS creates unique and timeless rugs that make places extraordinary and comfortable.

Rebekka Stange is the designer and founder of RÄKKI RUGS.

Since her studies of costume design with Prof. Florence von Gerkan, her work constantly deals with the interface between textile, space, and color.

By creating textile surfaces such as handmade rugs from Nepal, her inspiration in the creation process is often old, woven textiles. These are usually the colors of faded tones, which are sometimes caused by years of use and contact with sunlight. It is the imperfection that arises over the years through repeated use of light.

By combining individual color schemes and carefully processed natural materials, Rebekka Stange creates unique and timeless rugs that already look like classics. The interaction of proportion, material and color compositions makes RÄKKI RUGS distinctive.

„In my designs for RÄKKI RUGS, I have developed and cultivated a reduced color palette that uses color discreetly. A rug can take up a lot of space in a room, which is why I felt the need to reduce my designs right from the start. And there are usually a few other things in the room too, because our modern furnishings rarely consist of a rug in an empty room.“ says Rebekka.

A hand-knotted rug from Nepal, which takes months of manual work to create, is a true masterpiece of craftsmanship so I try to create an object with sensitive color tones, which in the best case is indispensable and always remains.

## Tibetan rug from Nepal

Material	Tibetan Highland wool, Nettle
Quality	100 knots hand carded, hand spun
Size	ca. L 250 x W 200 cm, 5 sqm.
Price	per sqm. 1.565,00 € excl. VAT, excl. transport cost

## RAHEL

Hand-knotted in Nepal

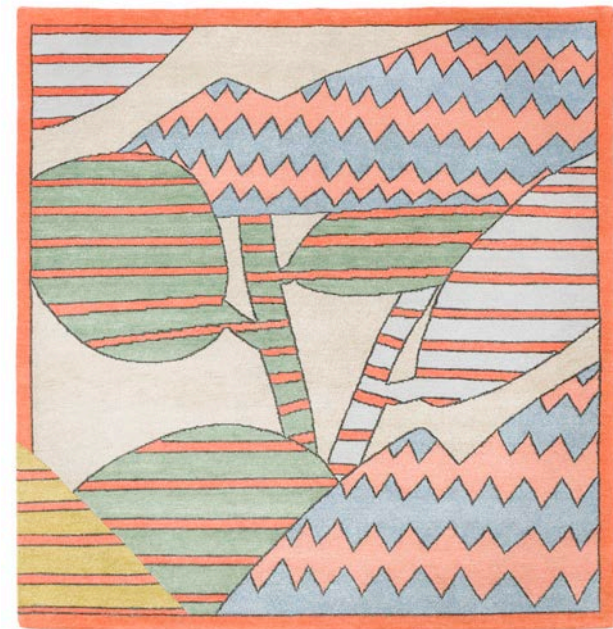


## Tibetan rug from Nepal

Material	Tibetan Highland wool, Nettle
Quality	100 knots hand carded, hand spun
Size	ca. L 156 x W 151 cm, 2,36 sqm.
Price	per sqm. 1.565,00 € excl. VAT, excl. transport cost

## ETEL

Hand-knotted in Nepal



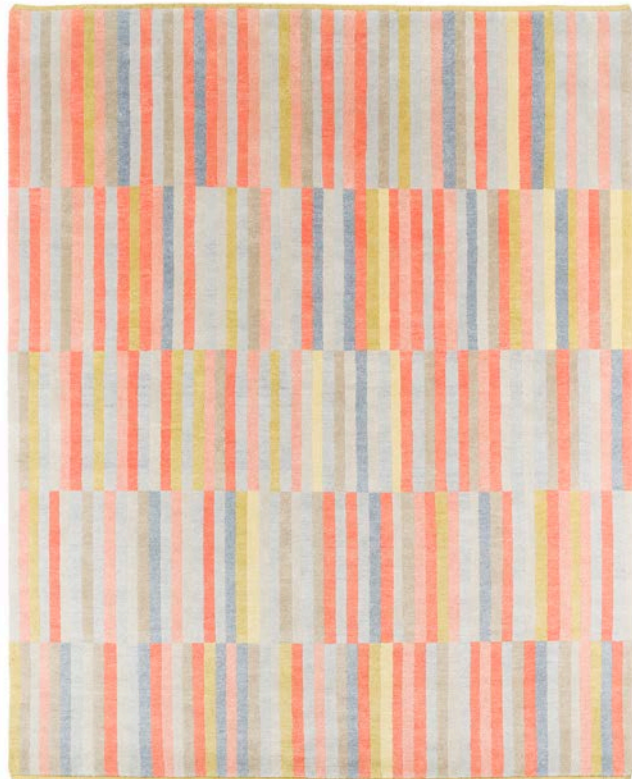


## Tibetan rug from Nepal

Material	Tibetan Highland wool, Nettle, Chinese Silk
Quality	100 knots / cross knot hand carded, hand spun
Size	ca. L 250 x W 200 cm, 5 sqm.
Price	per sqm. 2.100,00 € excl. VAT, excl. transport cost

## TIBET\_01

Hand-knotted in Nepal



## Tibetan rug from Nepal

Material	Tibetan Highland wool, Nettle, Chinese Silk
Quality	100 knots hand carded, hand spun
Size	ca. L 242 x W 172 cm, 4,16 sqm.
Price	per sqm. 1.690,00 € excl. VAT, excl. transport cost

## INGIBJÖRG

Hand-knotted in Nepal

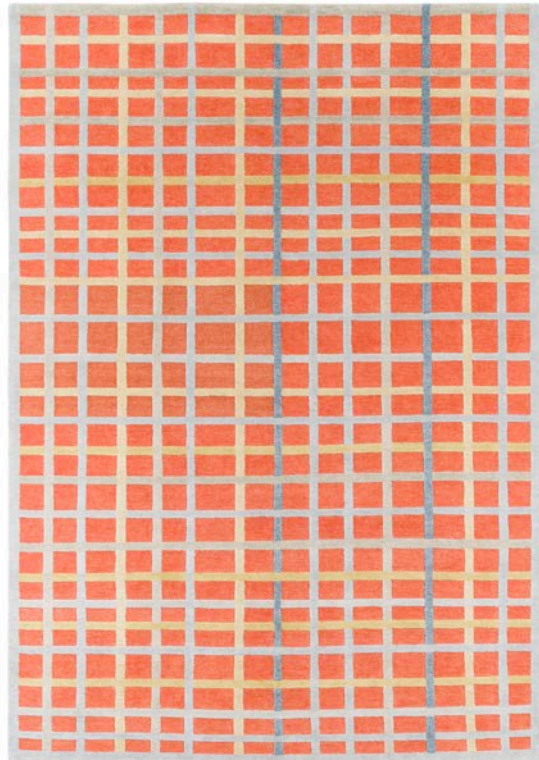


## Tibetan rug from Nepal

Material	Tibetan Highland wool, Nettle, Chinese Silk
Quality	100 knots, 2 pile high hand carded, hand spun
Size	ca. L 245 x W 172 cm, 4,21 sqm.
Price	per sqm. 1.690,00 € excl. VAT, excl. transport cost

## HILMA

Hand-knotted in Nepal

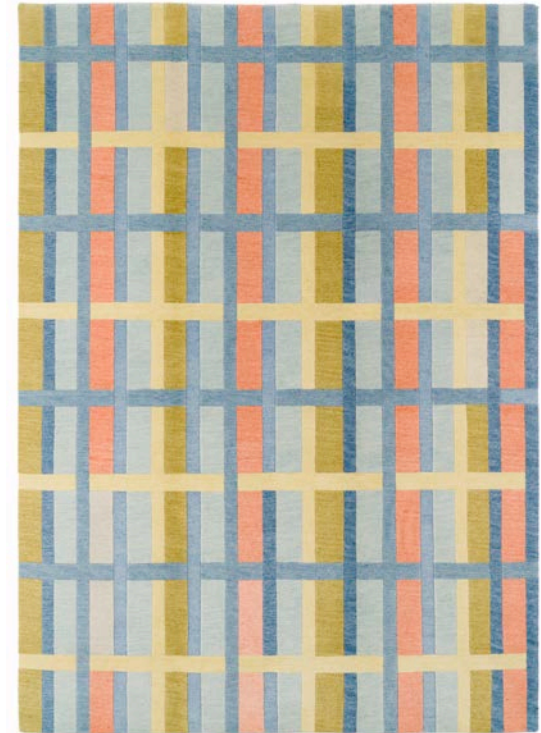


## Tibetan rug from Nepal

Material	Tibetan Highland wool
Quality	100 knots, 2 pile high hand carded, hand spun
Size	ca. L 242 x W 172 cm, 4,16 sqm.
Price	per sqm. 1.455,00 € excl. VAT, excl. transport cost

## MAX

Hand-knotted in Nepal



## Tibetan rug from Nepal

Material	Tibetan Highland wool, Nettle
Quality	100 knots / cross knots hand carded, hand spun
Size	ca. L 250 x W 200 cm, 5 sqm.
Price	per sqm. 1.565,00 € excl. VAT, excl. transport cost

## RAHEL\_O2

Hand-knotted in Nepal



## Tibetan rug from Nepal

Material	Tibetan Highland wool
Quality	100 knots hand carded, hand spun
Size	ca. L 202 x W 252 cm, 5,09 sqm.
Price	per sqm. 1.455,00 € excl. VAT, excl. transport cost

## MAGDALENE

Hand-knotted in Nepal





## Tibetan rug from Nepal

Material	Tibetan Highland wool, Nettle
Quality	100 knots hand carded, hand spun
Size	ca. L 240 x W 170 cm, 4,08 sqm.
Price	per sqm. 1.565,00 € excl. VAT, excl. transport cost

HJÖRDIS\_02

Hand-knotted in Nepal



## Tibetan rug from Nepal

Material	Tibetan Highland wool, Nettle
Quality	100 knots hand carded, hand spun
Size	ca. L 240 x W 170 cm, 4,08 sqm.
Price	per sqm. 1.565,00 € excl. VAT, excl. transport cost

HJÖRDIS

Hand-knotted in Nepal



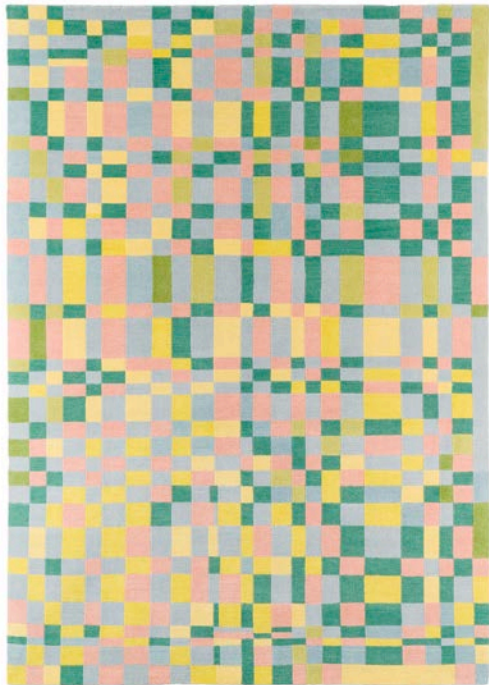


## Tibetan rug from Nepal

Material	Tibetan Highland wool
Quality	100 knots hand carded, hand spun
Size	ca. L 210 x W 150 cm, 3,15 sqm.
Price	per sqm. 1.455,00 € excl. VAT, excl. transport cost

## CARRÉ

Hand-knotted in Nepal



## Tibetan rug from Nepal

Material	Tibetan Highland wool
Quality	100 knots hand carded, hand spun
Size	ca. L 301 x W 252 cm, 7,58 sqm.
Price	per sqm. 1.455,00 € excl. VAT, excl. transport cost

## HJÖRDIS\_01

Hand-knotted in Nepal



Tibetan rug from Nepal

Material	Tibetan Highland wool, Nettle
Quality	100 knots / cross knots hand carded, hand spun
Size	ca. L 246 x W 172 cm, 4,23 sqm.
Price	per sqm. 1.565,00 € excl. VAT, excl. transport cost

JUNE

Hand-knotted in Nepal

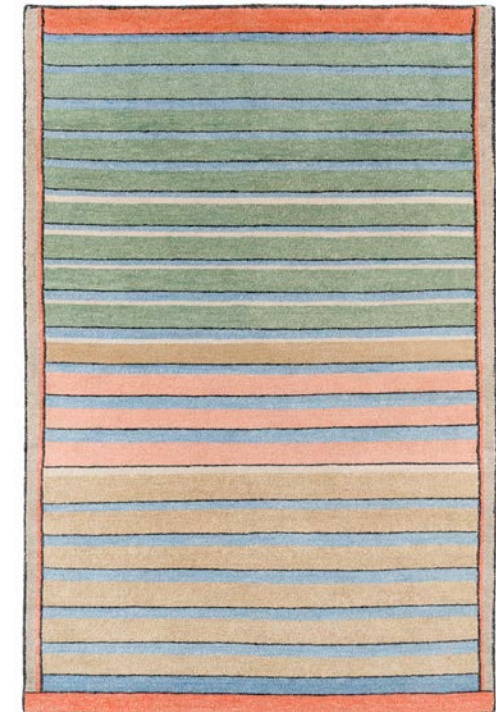


Tibetan rug from Nepal

Material	Tibetan Highland wool, Nettle
Quality	100 knots hand carded, hand spun
Size	ca. L 161 x W 107 cm, 1,72 sqm.
Price	per sqm. 1.565,00 € excl. VAT, excl. transport cost

SUSANNE

Hand-knotted in Nepal



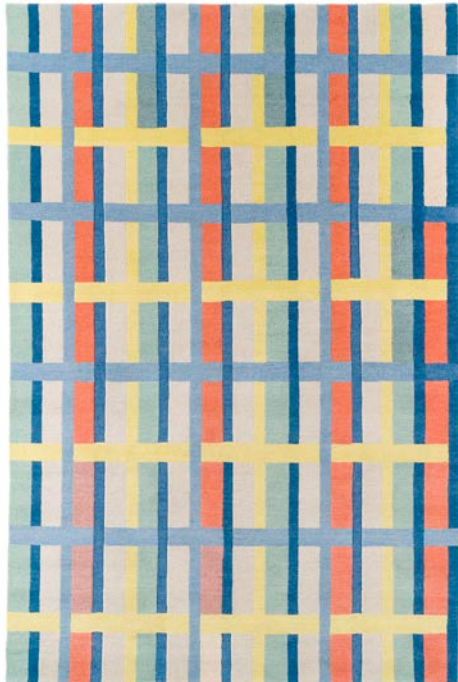


## Tibetan rug from Nepal

Material	Tibetan Highland wool
Quality	100 knots, 2 pile high hand carded, hand spun
Size	ca. L 185 x W 122 cm, 2,26 sqm.
Price	per sqm. 1.455,00 € excl. VAT, excl. transport cost

MAX\_01

Hand-knotted in Nepal



## Tibetan rug from Nepal

Material	Tibetan Highland wool, Nettle
Quality	100 knots, 2 pile high hand carded, hand spun
Size	ca. L 244 x W 134 cm, 3,27 sqm.
Price	per sqm. 1.455,00 € excl. VAT, excl. transport cost

MAX\_02

Hand-knotted in Nepal



## Tibetan rug from Nepal

Material	Tibetan Highland wool
Quality	100 knots hand carded, hand spun
Size	ca. L 188 x W 122 cm, 2,3 sqm.
Price	per sqm. 1.455,00 € excl. VAT, excl. transport cost

JOANNA

Hand-knotted in Nepal



## Tibetan rug from Nepal

Material	Tibetan Highland wool, Nettle, Chinese Silk
Quality	100 knots hand carded, hand spun
Size	ca. L 190 x W 123 cm, 2,33 sqm.
Price	per sqm. 1.690,00 € excl. VAT, excl. transport cost

JOANNA\_01

Hand-knotted in Nepal



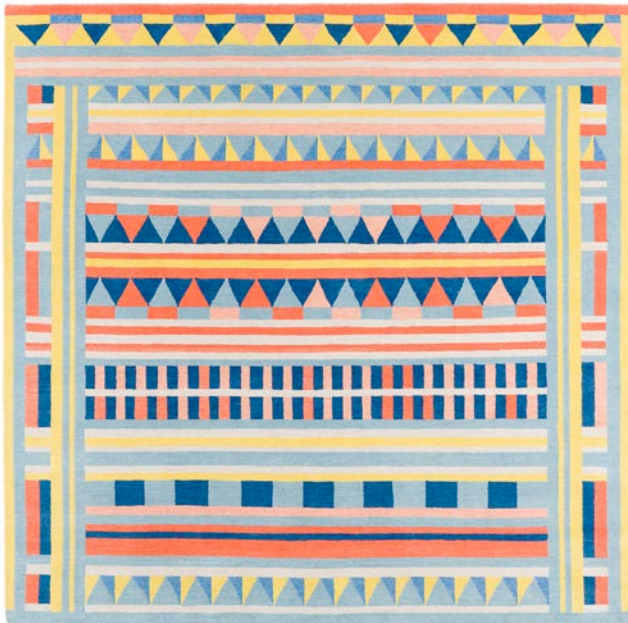


Tibetan rug from Nepal

Material	Tibetan Highland wool
Quality	100 knots hand carded, hand spun
Size	ca. L 160 x W 160 cm, 2,56 sqm.
Price	per sqm. 1.455,00 € excl. VAT, excl. transport cost

## SONAM

Hand-knotted in Nepal



Tibetan rug from Nepal

Material	Tibetan Highland wool, Nettle, Chinese Silk
Quality	100 knots hand carded, hand spun
Size	ca. L 161 x W 160 cm, 2,57 sqm.
Price	per sqm. 1.690,00 € excl. VAT, excl. transport cost

## SONAM\_02

Hand-knotted in Nepal



## Tibetan rug from Nepal

Material	Tibetan Highland wool, Nettle
Quality	100 knots hand carded, hand spun
Size	ca. L 302 x W 252 cm, 7,61 sqm.
Price	per sqm. 1.565,00 € excl. VAT, excl. transport cost

## RAHEL\_01

Hand-knotted in Nepal



## Tibetan rug from Nepal

Material	Tibetan Highland wool, Nettle, Chinese Silk
Quality	100 knots hand carded, hand spun
Size	ca. L 260 x W 212 cm, 5,51 sqm.
Price	per sqm. 1.690,00 € excl. VAT, excl. transport cost

## TIBET

Hand-knotted in Nepal





10% surcharge for custom sizes + color changes

20% - 30% surcharge for complex design changes

standart sizes are: 150x150, 160x160, 150x210, 170x240, 200x250, 250x300,  
274x365, 305x427

3 – 6 month production time for Tibetan weave

For more information please reach us by mail:

[info@raekki-rugs.com](mailto:info@raekki-rugs.com)

# RÄKKI RUGS

Rebekka Stange

Linienstrasse 71

10119 Berlin

[info@raekki-rugs.com](mailto:info@raekki-rugs.com)

[www.raekki-rugs.com](http://www.raekki-rugs.com)